

MONASH Careers Update

Information for careers and secondary school teachers advising students about study at Monash

50
1959-2008

50 years
Engaging
the world

Welcome

Welcome to the seventh edition of the Monash Careers Update for 2008.

It was wonderful to meet so many prospective students and their families at our Open Day on Saturday 2 and Sunday 3 August. I am happy to advise that the Year 10 Tertiary Entry in 2011 Guide is now available. Details for ordering multiple copies are below.

We are running Parent Information Evenings throughout August and hope to meet many of your students' parents to provide them with valuable information about studying at Monash.

We hope that you find the Careers Update a useful resource. If you have any suggestions for improvements, or have information you would like us to cover, please email your comments to: angela.maplestone@adm.monash.edu.au

Kind Regards,
The Onshore Student Recruitment Team

Scholarships update

2009 Coursework Scholarships applications now open

In 2009, scholarships and bursaries totaling more than \$10m will be offered to students based on academic achievement, student's personal circumstances or a combination of both academic achievement and personal circumstances.

2009 Coursework Scholarships Guide

Details of all the scholarships and bursaries available, including eligibility and selection criteria, can be found in the 2009 Coursework Scholarships Guide or online.

For copies of the guide, contact Candice Menidis (candice.menidis@adm.monash.edu.au) in the Coursework Scholarships Unit.

Applications

We recommend that Year 12 applicants use the VTAC form. Students can also apply for a range of scholarships via the Monash application form. Students submitting an application on either form will be considered for the range of merit, equity and merit and equity based scholarships and bursaries at Monash University.

- VTAC applications (open now)
Applications and supporting documentation close: 5pm (AEST) Friday 10 October 2008
www.vtac.edu.au/scholarships.html
- Monash applications (open now)
Applications close 5pm (AEST) Friday 31 October 2008
Supporting documentation closes 5pm (AEST) Friday 14 November 2008
www.monash.edu.au/scholarships

Monash 2008 Open Day

The Monash Open Day, held 2/3 August across all six Victorian campuses, had the highest attendance on record, with more than 43,000 visitors to Monash University across the weekend.

Students who attended are invited to provide feedback and possibly win an iPod Shuffle. Details are available at:

www.monash.edu.au/openday

August 2008

Scholarships update

Enhancement Studies

Events updates

Course update

- Bachelor of Pharmacy

Short courses - Art & Design

DNA Workshops at Gippsland

Faculty updates

- Engineering

- Information Technology



Year 10 Guides now available!

The Year 10 Tertiary Entry in 2011 Guide is now available to order through Waivestar.

Just log on to www.waivestar.com to place your order.

Please note there are 40 guides per box.

New in 2009 – Shuttle bus service at the Peninsula campus

A regular shuttle bus service for Monash students will commence operation between Frankston train station and the Peninsula campus in 2009.

Enhancement Studies Program

Enhancement Studies Program Information Evening

Wednesday 15 October, Clayton campus, South One Lecture Theatre

This event will provide students and their parents with an overview of the program, and the opportunity to speak to past Enhancement Studies students and the academics who teach the program.

Registrations

Please book online at www.monash.edu.au/study/enhancement/booking-form.html

More information

If you have individual enquiries or if your school would like to be involved, please contact Helen O'Keeffe on +61 3 9903 4810 or email: Helen.OKeeffe@adm.monash.edu.au.

Focus on Philosophy

Enhancement Studies Philosophy is among our most popular programs, with 41 students enrolled this year.

Studying philosophy develops general, transferable skills that are highly sought after by employers, such as reasoning, argument, communication, depth and breadth of view, originality of thought, cooperativeness and responsibility.

These skills are also valuable for success in any course students may be interested in. The 2007 Philosophy Enhancement students who are now fully enrolled with Monash have chosen a broad range of degrees, including Law, Arts, Engineering, Management/Marketing, Visual Communication, Journalism and Nursing.

More information

Enhancement Studies Philosophy: <http://arts.monash.edu.au/philosophy/ugrad/vce/index.php>

Parent Information Evenings

Information sessions for parents will be held at the following venues:

- Geelong, Monday 11 August (Mercure Hotel)
- Ballarat, Monday 18 August (Wendouree Centre for Performing Arts)
- Melbourne, Monday 25 August (Caulfield campus)
- Bendigo, Monday 1 September (Monash Uni, Bendigo Regional Clinical School)

More information

Freecall 1800 MONASH

For venue information or to register a booking: www.monash.edu.au/parents

Faculty update

Faculty of Engineering

Information Evening

Wednesday 3 September, 7 – 9.30pm

Lecture Theatre C1, Building 63, Clayton campus

A special evening for prospective students and their families: a presentation by academic and student speakers will be followed by the opportunity to take a tour of facilities and talk with course advisers and faculty staff. This is an excellent opportunity to follow up on Open Day and of particular relevance to students in Year 12.

Registrations

Places are limited. Please register online at www.eng.monash.edu.au or telephone (03) 9905 3404.

Programs for Art and Design students

Folio Enhancement Workshop (Drawing)

Sessions: 5 x 1 day sessions
Start date: 21 August 2008
Finish Date: 2 October 2008
Days: 10am–4pm
Cost: \$475 including materials
Location: Fine Arts, Faculty of Art & Design, Monash University Caulfield campus Building D, Level 1, Room 12

More information

Further information regarding registration is contained in the flyer pdf attached with this newsletter, or contact:

Ken Smith on (03) 9903 2168, or email Kenneth.Smith@artdes.monash.edu.au

Monash College folio preparation courses

Monash College will be conducting folio preparation courses for students wanting to enhance their folios or extend their skills in the areas of:

- Observational drawing
- Graphic Design and Visual Communication

In an intensive small group setting, these programs include one-on-one tuition with an experienced professional practitioner within dedicated Art and Design studios.

Observational Drawing

Sessions: 7 x 3-hour sessions
Days: Thursdays, 5.30–8.30pm
Start date: 21 August 2008
Finish Date: 2 October 2008
Cost: \$395 including materials
Location: Monash College, Monash University, Caulfield campus, Building B, Level 5

Graphic Design and Visual Communication

Sessions: 7 x 3-hour sessions
Days: Wednesdays, 5.30–8.30pm
Start date: 20 August 2008
Finish Date: 1 October 2008
Cost: \$450 incl. materials
Location: Monash College, Monash University, Caulfield campus, Building B, Level 5

More information

Program details and application forms: www.monash.edu/monashcollege/courses

Course update

Bachelor of Pharmacy

Virtual practice environment and virtual patients

New teaching initiatives, including a virtual teaching space and virtual patients, are being introduced to improve the learning experience for Bachelor of Pharmacy students in 2008.

Two new virtual practice environment spaces will provide a variety of virtual settings where students can practise and develop their counselling and communication skills.

Each space contains screens for projecting high-resolution images. Here students can interact with patients, health professionals and others – face-to-face and through video conferencing, online software and avatars. Projected images represent the current range of practice settings, including community pharmacy, hospital ward, rural pharmacy depot and remote community health service. The 'virtual' nature of the environment will be complemented by props and resources such as specific medicines, references and self-care cards to enhance the experience.

The rooms expose students to the processes they will find in practical placements, within a safe and supervised environment. This will not replace first hand practical experience, but will allow students to become familiar with the workplace structure.

The 'Virtual Patient' is an eLearning system where verbal commands from a student to a 'patient' result in an immediate verbal or non-verbal response from an animated computer graphic. A virtual patient case is developed to demonstrate the effects of the student's decision on the patient, both visually and aurally.

These new initiatives will be monitored and continually evaluated to ensure their suitability for students and alignment with educational objectives.



Correction to Rural Pharmacy Scholarship

In the last edition of the Monash Careers update, the new rural Pharmacy scholarship was advertised incorrectly. The correct details are:

Stan Robson Rural Pharmacy Equity Scholarship

This scholarship is valued at \$4,000 per annum for a maximum of four years. It is awarded to the highest-achieving Year 12 applicant from a rural and isolated area and experiencing financial hardship.

More information

Eligibility and selection criteria for all scholarships and bursaries offered at Monash is available in the 2009 Coursework Scholarships Guide and the website.

www.monash.edu.au/scholarships

Monash on Show

www.monash.edu.au/on-show

The Monash on show website showcases Monash in pictures, with links to campus tours, faculty videos and more.



Online brochure ordering

Waivestar tip of the month

Each month we will provide a tip to assist you in getting the most out of using the Waivestar online brochure ordering system.

The waivestar website can be found at: www.waivestar.com.au. Your user name is your initial and surname. For instance Angela Maplestone is amaplestone. Your password is the one Waivestar created for you and confirmed via email.

Tip for August: Click on 'Accept Order' rather than 'Save Order'

When you are satisfied with your order and are ready to submit it, click on 'Accept Order'. If you click 'Save Order' the system just stores your order in the system for you to come back to later - it won't actually send your request to the warehouse for fulfilment.

More information

www.monash.edu.au/study/schools/brochures

Experience Monash Peninsula

Monday 29 September

Are you a student in Year 10, 11 or 12 or a parent of a student in one of these years? If so, we invite you to come and Experience Monash Peninsula. Peninsula campus is home to a great range of high quality courses in health, education and business disciplines.

The program aims to introduce you to the opportunities and experiences available to students at Monash Peninsula. Tour the campus, speak to staff and current students, experience our facilities and learn more about the transition to university.

Registrations

Online registrations open Friday 15 August. www.monash.edu.au/study/events/experience

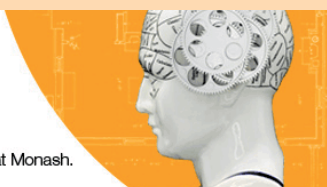
Peninsula campus - with EastLink it's closer than you think!

ResearchMatters

Monash Research Month

18 August - 19 September 2008

Celebrating the great minds, innovative thinking and leading-edge research at Monash.



www.monash.edu/researchmatters

Faculty update

Faculty of Education

Bachelor of Primary Education Middle school option (Gippsland campus)

Students enrolled in the Bachelor of Primary Education at the Gippsland campus now have the option of completing a middle school option, providing additional skills for teaching in Years 7-10.

Students who take this option will complete four units from the secondary course and complete 25 of their 80 days professional placement in a secondary school setting. Whilst this middle school option does not provide students with a secondary teaching qualification, it provides increased knowledge and confidence to teach up to Year 10.

Students can decide in their first or second year of their degree whether to take up this option. As part of the degree, students will undertake one elective on adolescent development and one elective that focus on middle year schooling.

This provides the students with a greater knowledge and skills for the middle school age group, thereby broadening their knowledge base in teaching for that age range.

The Education Show 2008

Friday 8 - Saturday 9 August, 10am - 5pm
Caulfield Racecourse

The Education Show features fresh ideas for the classroom, school and career options.

The Faculty of Education will exhibit at stand 73 at the show, and showcase Early Childhood, Primary and Secondary undergraduate degrees, Graduate Diplomas and all Postgraduate degrees including the popular Master of Education.

More information

www.education.monash.edu.au or www.educationshow.com.au

Update to prerequisites for Education courses

Amendment to the Maths prerequisite requirements for our Education courses as printed in the Monash Undergraduate Course Guide.

The mathematics prerequisite for all Undergraduate Education courses except Bachelor of Business and Commerce/Bachelor of Education (Primary) and Bachelor of Commerce/Bachelor of Education (Secondary) courses is Units 1 to 4 – any two units from further mathematics, general mathematics, specialist mathematics or mathematical methods (either).

Prerequisites stated in the Undergraduate Course Guide 2009 (pages 60-66) are incorrect, where it states that the mathematics prerequisite is Units 1 and 2 – two units of mathematics (any).

Applicants with Foundation Maths only

Prerequisites do not include Foundation Maths. Applicants who only hold Foundation Maths units should undertake the other Maths units if still at secondary college. Otherwise they could consider undertaking a mathematics unit through Open Universities Australia (www.open.edu.au) or through TAFE (though this will not count towards their ENTER score).

Note: Prerequisite information for Education courses in the 2009 VTAC Guide is correct.

Gippsland campus

Hands-on skills at DNA workshops

VCE students from 14 schools across the greater Gippsland region, including Kurnai College, Drouin Secondary College, Trafalgar High School, Catholic College Sale and Korumburra Secondary College, took the opportunity to learn more about DNA in the laboratories at the University's Gippsland campus.



Monash demonstrator Kate Lucas (seated), pictured with Sale Catholic College teacher Julie Bradley, and students.

Students gained valuable practical experience relevant to the VCE Unit 4: Biological Continuity and Change. They were able to perform the basic techniques required for genetic engineering and DNA fingerprinting.

These are essential tools in the rapidly expanding field of molecular biology. For example, DNA fingerprinting enables genetic diseases to be diagnosed before symptoms occur, enabling treatment to be commenced at an early stage. Genetic engineering techniques are used to produce many new drugs and pharmaceuticals.

Participant feedback

Kurnai College Biology teacher Zoe Burney explained how the workshops provide local students with an opportunity to experience University culture and to participate in scientific activities that are not typically available at VCE level.

"Our students were excited to have this experience in a real laboratory situation with qualified demonstrators. Overall, it was a highly educative event. Using the equipment available in University laboratories gives students a taste of what it may be like to study and work in areas that require advanced biological knowledge and techniques."

Sale College teacher Kathryn Courtney-Jones described how the workshops provide local students with an opportunity to expand their learning.

"It's very beneficial having access to the advanced equipment and talking to the demonstrators. It makes molecular biology more real and hands-on for the students."

Chairo Christian College teacher Gordon Bedford also said the workshops provide local students with an opportunity to expand their learning.

"I've been coming to this program for 9 years now, and it's always great in regards to its content and the general environment around the campus. We really appreciate the chance to come here where the equipment is much more sophisticated than what we can provide back at school."

The School of Applied Sciences and Engineering at Gippsland Campus, Churchill will again be welcoming secondary students for DNA Workshops in July 2009.

Faculty of Information Technology

IT Challenge competition 2008

The IT Challenge is a multiple category competition for high school students and is celebrated in a final IT Challenge awards night at BMW Edge Federation Square (Melbourne) on Tuesday 16 September 2008.

The IT Challenge

Programming

- Students are required to design and program a project using Visual Basic. Possible project ideas include interactive booking systems, calculator or multimedia products.

Database

- Students are required to develop a database using various software applications.

Game development

- Design and build a computer game.

Web design

- Design and develop an interactive website.

Film

- Students are required to develop a short film or documentary (maximum 3 minutes in duration).

3D Maya/Max

- Please refer to the 3D Maya/Max Competition web page for further details www.infotech.monash.edu.au/promotion/competitions/maya/

Flash

- Please refer to the Flash Competition webpage for further details. www.infotech.monash.edu.au/about/schools/berwick/events/flash2007/

Open IT category

- This category is open to the IT related areas that are not defined in this competition. Before entering this category, a High School must give good reason why its entry should be accepted for judging.

Prizes

Winning students and schools will be awarded prizes and trophies for placing 1st, 2nd and 3rd in each category.

Awards of Merit will also be presented to various students who have not placed in the top three but showed outstanding achievement.

IT Challenge Student of the Year

From the winning students, three will be selected as 1st, 2nd and 3rd IT Challenge Students of the Year. This award will be announced on the night.

Awards night, Tuesday 16 September 2008

The IT Challenge awards night will be held at the BMW Edge Federation Square Melbourne and is cordially sponsored by Autodesk, Connecting point, GameHead, Storm FX and the Faculty of Information Technology.

More information

Please refer to the competition page (under Quick links) on the faculty website at www.infotech.monash.edu.au for more details regarding the competition or contact: Andrew Owen on 03 9903 1441 or email: andrew.owen@infotech.monash.edu.au

Monash University Onshore Student Recruitment Office

Contact us

Email: future@monash.edu.au
Telephone: 1800 MONASH

Office hours (Melbourne time):
9am-5pm Monday-Friday

871 Dandenong Road
Caulfield East Victoria 3145

Our staff

Jodie Martin-Blick
Manager
(03) 9903 4751

Helen O'Keeffe
Assistant Manager (Programs)
(03) 9903 4810

Angela Maplestone
Assistant Manager (Recruitment)
(03) 9903 4752

Jim Zubic
Regional Manager
(03) 9903 4750

Hemant Kokularupan
Student Recruitment Coordinator
(03) 9903 4757

Rachel Edwards
Student Recruitment Coordinator
(03) 9903 4755

Britta Morrison
Student Recruitment Coordinator
(Peninsula)
(03) 9904 4698 (Peninsula)
(03) 9903 4755 (Caulfield)

Guiseppe Marino
Future Student Coordinator, Gippsland
(03) 9902 6987, (03) 5122 6987

Melissa Melder
Enhancement Officer
(03) 9903 4756

Val Foster
Admin Officer (Programs)
Monash Prize Coordinator
(03) 9903 4758

Steve Ryan
Information Coordinator
(03) 9903 4759

Quick links

Monash Course Finder

www.monash.edu/courses/coursefinder

Links for Career Teachers and Schools

www.monash.edu.au/study/schools

Monash news and events

www.monash.edu/news